

# Radiology Consultants Associated is now Offering Additional Cardiac Services



**Radiology  
Consultants**  
ASSOCIATED

125, 40 Sunpark Plaza SE, Calgary, AB T2X 3X7

Our new Sunpark Plaza facility has been recently completed and we are now pleased to offer Nuclear Cardiac Stress Tests (Myocardial Perfusion Imaging) and routine Exercise Stress Tests for your patient's cardiac health.

## Myocardial Perfusion Imaging (MPI) – General Information

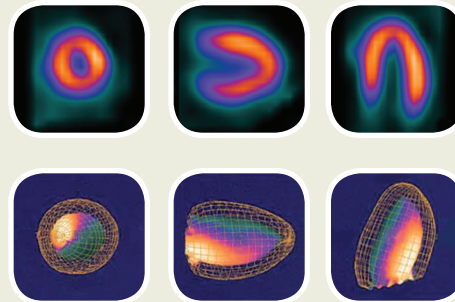
The Myocardial Perfusion Stress Test is a non-invasive means of detecting and assessing the severity and extent of coronary artery disease (CAD), by utilizing Myoview (99m technetium tetrofosmin), a radiopharmaceutical designed for the purposes of heart scanning.

MPI has two components to the exam; rest and stress, which are performed on separate days.

The Myocardial Perfusion Stress Test is performed in conjunction with treadmill exercise or pharmacologic stress utilizing Persantine (dipyridamole), if your patient cannot exercise adequately.

### EVALUATES:

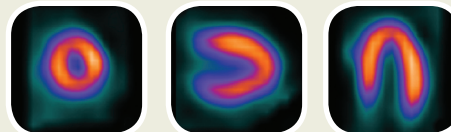
<b>Perfusion:</b>	Extent and severity of disease.
<b>Function:</b>	Calculates Left Ventricular Ejection Fraction (LVEF) and evaluates wall motion.



### APPROPRIATE FOR:

<b>Diagnosis:</b>	Highly sensitive and specific for the detection and assessment of severity and extent of CAD.	<b>Prognosis:</b>	Perfusion and functional information can be used to risk stratify patients into low, moderate and high clinical risk with both known and suspected CAD.
-------------------	---	-------------------	---

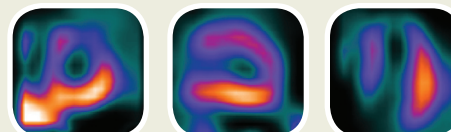
Low Risk – Normal



Moderate Risk – Mildly Abnormal



High Risk – Severely Abnormal



MPI scans provide information over and above routine exercise stress tests which can help manage your patients confidently.

[More information...](#)

# Myocardial Perfusion Imaging (MPI) – General Information (Continued)

## USEFUL IN THE FOLLOWING CLINICAL SCENARIOS:

- Diagnosis of CAD
- Risk Stratification of patients
- Inability to perform exercise or poor exercise tolerance: Pharmacologic Stress
- Indeterminate routine Exercise Stress Tests
- Baseline resting ECG abnormalities: (i.e. LBBB which decrease accuracy of exercise stress tests)
- Women: More commonly present with atypical chest pain and have a higher incidence of false positive Exercise Stress Tests
- Diabetics: Silent Ischemia
- Pre-Operative Cardiac Risk Assessment

## Routine Exercise Stress Test



Exercise Stress Testing is designed to evaluate for the presence or absence of significant ischemic heart disease, evaluate the efficacy of your patients' current therapy or measure their physical fitness for work or sport.

Useful for assessment of patients with low to moderate clinical risk of CAD and good exercise tolerance.

## Booking Your Patients

- Simply call our central booking line at **403.777.3000** to schedule the exam time that works best for your patient.
- Fax the Cardiac Assessment Requisition to our Sunpark Plaza location at **403.777.3148**. The requisition form has a convenient area to add your patient's appointment time and date.
- Patient instructions are provided on the back of the requisition. More detailed instructions are provided to your patients before their exam date. Rest assured, they will be fully informed about directions, preparation procedures, etc. and we are always available to answer any questions they may have.

## LOCATION



**Radiology  
Consultants**  
ASSOCIATED

125, 40 Sunpark Plaza SE  
Calgary, AB T2X 3X7  
**Central Booking:** 403.777.3000  
**Toll Free:** 1.866.611.2665

